

4

3

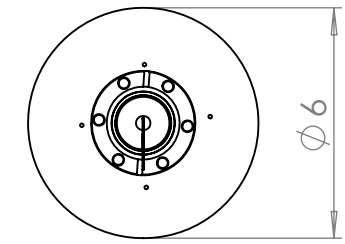
2

1

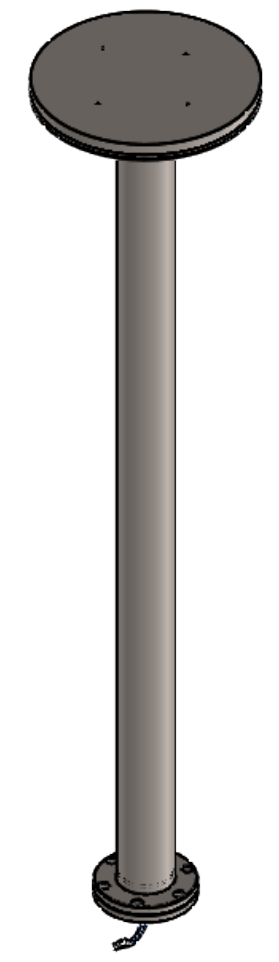
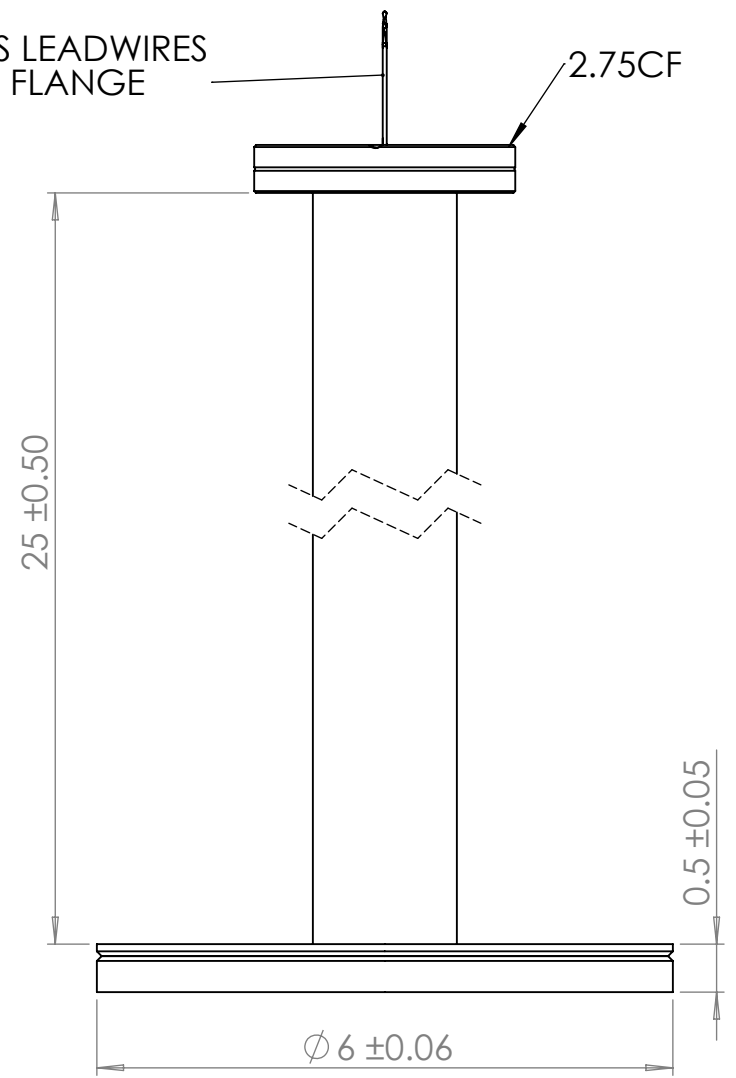
PLEASE SIGN TO APPROVE

SIGNATURE: \_\_\_\_\_/\_\_\_\_\_

The information given herein is based on data believed to be accurate, but BCE makes no expressed or implied warranties as to its accuracy, or performance, and assumes no liability arising out of its use by others. This information does not constitute a license to use or infringe on any patents.



MINIMUM OF 6" FIBERGLASS LEADWIRES EXTENDING FROM BASE OF FLANGE



NOTES:

- 1. ELECTRICAL: 1000 WATT(+/- 10%), 120 VOLT
- 2. VACUUM LEAK TESTED TO 10<sup>-9</sup> ATM-CC/SEC
- 3. BODY,SLEEVE & FLANGE SS304 CONSTRUCTION
- 4. ASSEMBLY WILL BE CLEANED TO BCE HIGH PURITY STANDARDS

**PROPRIETARY AND CONFIDENTIAL**  
THE INFORMATION CONTAINED IN THIS DRAWING IS THE SOLE PROPERTY OF BELILOVE CO. ENGINEERS. ANY REPRODUCTION IN PART OR AS A WHOLE WITHOUT THE WRITTEN PERMISSION OF BELILOVE CO. ENGINEERS IS PROHIBITED.

UNLESS OTHERWISE SPECIFIED:		NAME	DATE	<b>BCE</b>
DIMENSIONS ARE IN INCHES		DRAWN	A.M	
TOLERANCES:		CHECKED		
FRACTIONAL ±		ENG APPR.		
ANGULAR: MACH ± BEND ±		MFG APPR.		TITLE:
TWO PLACE DECIMAL ±.020		Q.A.		PEDESTAL HEATER
THREE PLACE DECIMAL ±.005		COMMENTS:		304 SS
INTERPRET GEOMETRIC TOLERANCING PER:	MATERIAL	THIS DRAWING IS FOR REFERENCE ONLY.		SIZE DWG. NO.
SEE DWG	SEE DWG	FINAL PRODUCT MAY DIFFER.		<b>B</b> BCE11126
FINISH	DO NOT SCALE DRAWING			REV -
				SCALE: NTS WEIGHT: N/A SHEET 1 OF 1

4

3

2

1

B

B

A

A