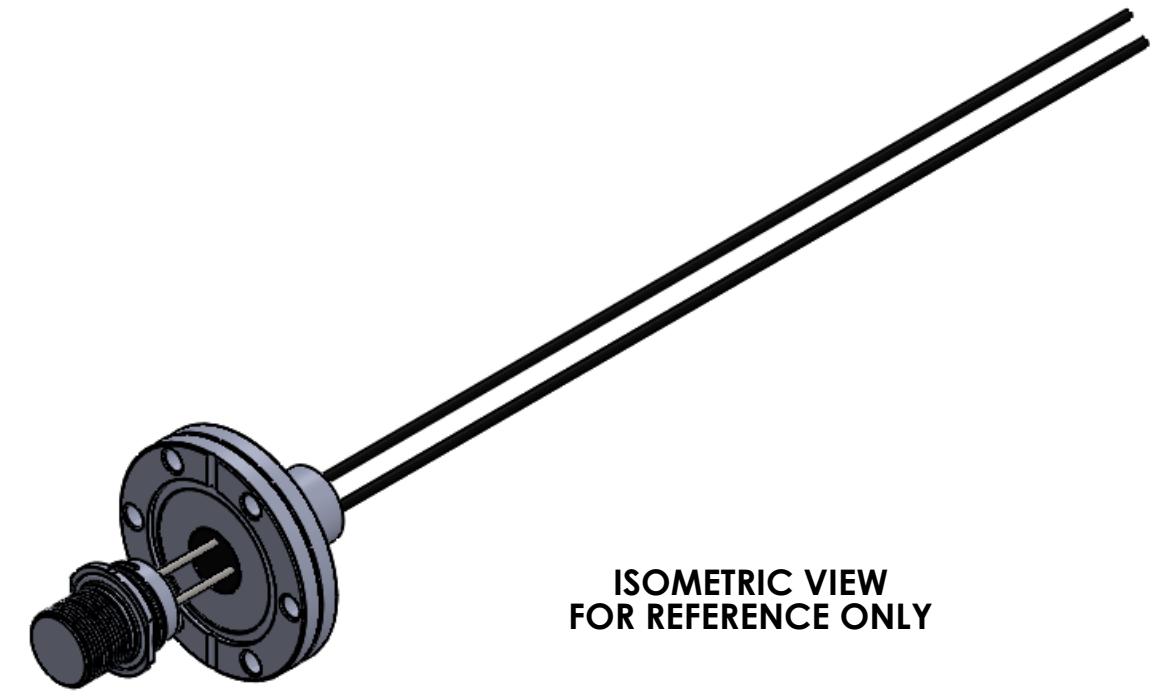


**THIS DRAWING IS FOR REFERENCE ONLY
FINAL PRODUCT MAY DIFFER**



**ISOMETRIC VIEW
FOR REFERENCE ONLY**

**GLENAIR
IN-VACUUM CONNECTOR**

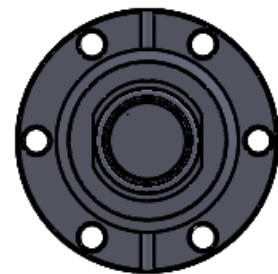
4X 316 SS PINS

304L SS CF40 FLANGE

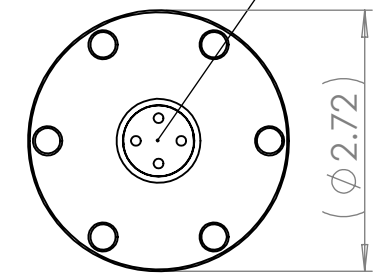
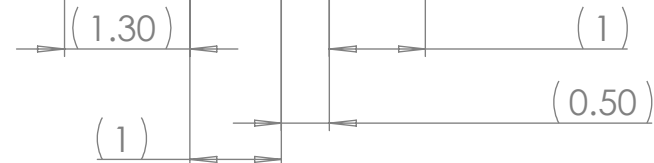
316 SS SLEEVE

4X 10 AWG STRANDED WIRES

BCE EPOXY



**VACUUM SIDE
CUSTOM IN-VACUUM CONNECTOR**



**ATMOSPHERE SIDE
4 PIN CONFIGURATION**

NOTES

1. Helium Leak Test: 10^{-6} Torr
2. Continuous Operating Temperature: -30°C to 60°C
3. 1000 VAC rating, 15A/conductor
4. BCE Epoxy:
 - a. Outgassing: meets NASA ASTM E595
 - b. Total Mass Loss (TML): $<1.0\%$
 - c. Collected Volatile Condensable Materials: $<0.1\%$
 - d. Dielectric Constant (1 KHz): 3.8

5 Pins will be soldered into in-vacuum connector

UNLESS OTHERWISE SPECIFIED:

DIMENSIONS ARE IN INCHES
TOLERANCES:
FRACTIONAL \pm
ANGULAR: MACH \pm BEND \pm
TWO PLACE DECIMAL \pm
THREE PLACE DECIMAL \pm

INTERPRET GEOMETRIC
TOLERANCING PER:

MATERIAL
SEE DWG

FINISH
SEE DWG

DO NOT SCALE DRAWING



TITLE:

**CUSTOM
FEEDTHROUGH**

SIZE

B

DWG. NO.

BCE10006

REV

1

SCALE: 1:5

WEIGHT: N/A

SHEET 1 OF 1

PROPRIETARY AND CONFIDENTIAL
THE INFORMATION CONTAINED IN THIS
DRAWING IS THE SOLE PROPERTY OF
BELLOVE CO. ENGINEERS. ANY
REPRODUCTION IN PART OR AS A WHOLE
WITHOUT THE WRITTEN PERMISSION OF
BELLOVE CO. ENGINEERS IS
PROHIBITED.